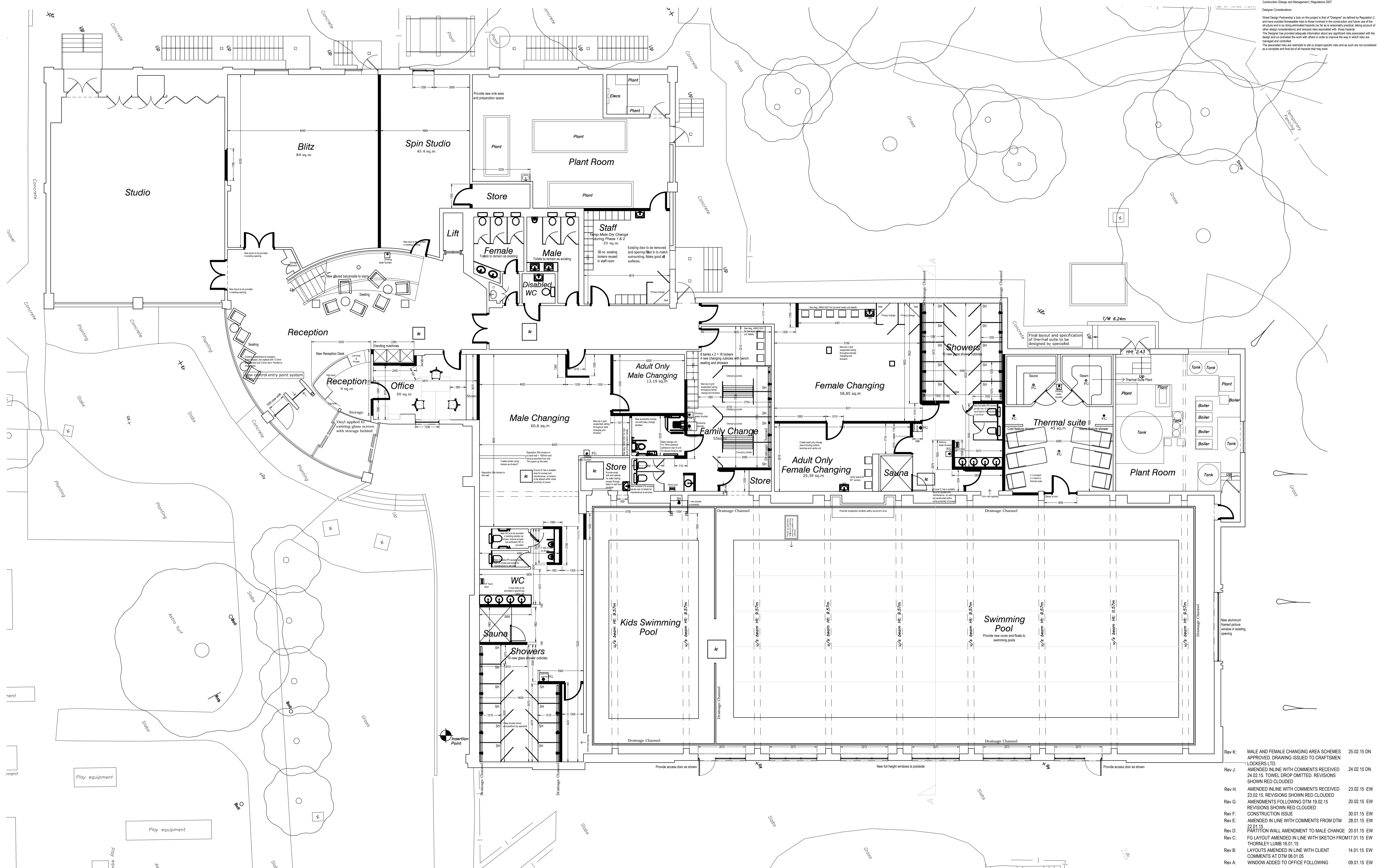


Designer Considerations
The Designer has provided adequate information about any significant risks associated with the design and construction of the work with a view to ensuring that the risks are managed and controlled.
The associated risks are restricted to site or project specific risks and as such are not considered as a complete and final list of all hazards that may exist.



- Rev K: MALE AND FEMALE CHANGING AREA SCHEMES APPROVED. DRAWING ISSUED TO CRAFTSMEN LOCKERS LTD. 25.02.15 DN
- Rev J: AMENDED IN LINE WITH COMMENTS RECEIVED 24.02.15. TOWEL DROP OMITTED. REVISIONS SHOWN RED CLOUDED. 24.02.15 DN
- Rev H: AMENDED IN LINE WITH COMMENTS RECEIVED 23.02.15. REVISIONS SHOWN RED CLOUDED. AMENDMENTS FOLLOWING DTM 19.02.15. REVISIONS SHOWN RED CLOUDED. 23.02.15 EW
- Rev G: AMENDED IN LINE WITH COMMENTS FROM DTM 22.01.15. PARTITION WALL AMENDMENT TO MALE CHANGE. 20.01.15 EW
- Rev F: CONSTRUCTION ISSUE. 30.01.15 EW
- Rev E: AMENDED IN LINE WITH COMMENTS FROM DTM 28.01.15 EW
- Rev D: FG LAYOUT AMENDED IN LINE WITH SKETCH FROM 17.01.15 THORNLEY LUMB 16.01.15. 20.01.15 EW
- Rev B: LAYOUTS AMENDED IN LINE WITH CLIENT COMMENTS AT DTM 08.01.06. 14.01.15 EW
- Rev A: WINDOW ADDED TO OFFICE FOLLOWING REVISION. 08.01.15 EW

client: LENSBURY LTD	project: LOCKSIDE DEVELOPMENT LENSBURY RESORT TEDDINGTON TW11 9NU	drawing: PROPOSED GROUND FLOOR PLAN
project no: 5994	drawing no: A100(10)03	revision: K
drawn: HG	checked: HG	date: 18.12.14
scale: 1:100		

CONSTRUCTION ISSUE